



GML Relay

November 17, 2004

Kees van Prooijen
Oscar Custers

Bentley Geospatial

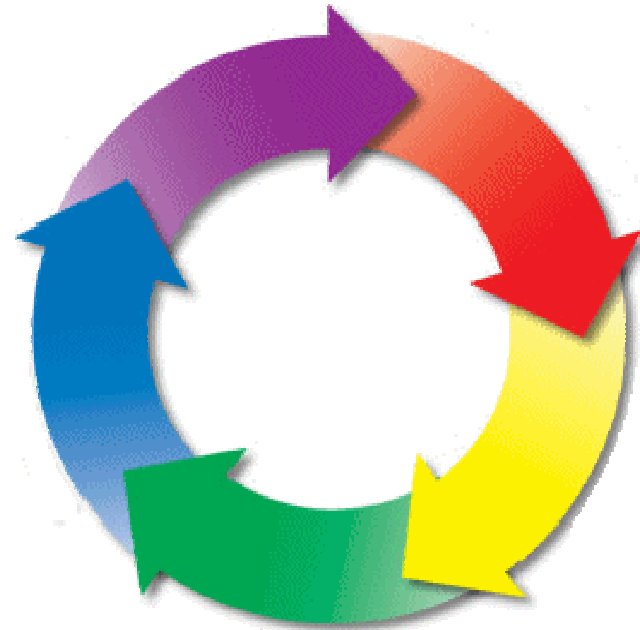
Solutions for Communications, Government,
and Utilities.



Spatially Enabled Managed Environment

A unifying environment throughout the project lifecycle for ...

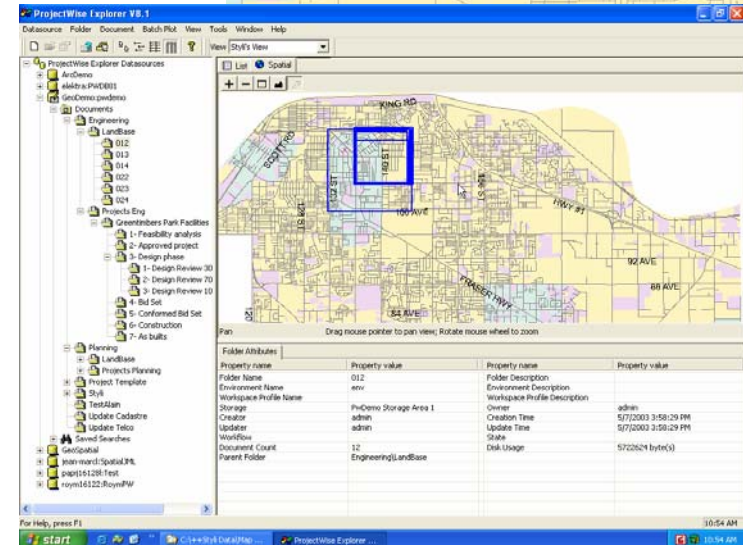
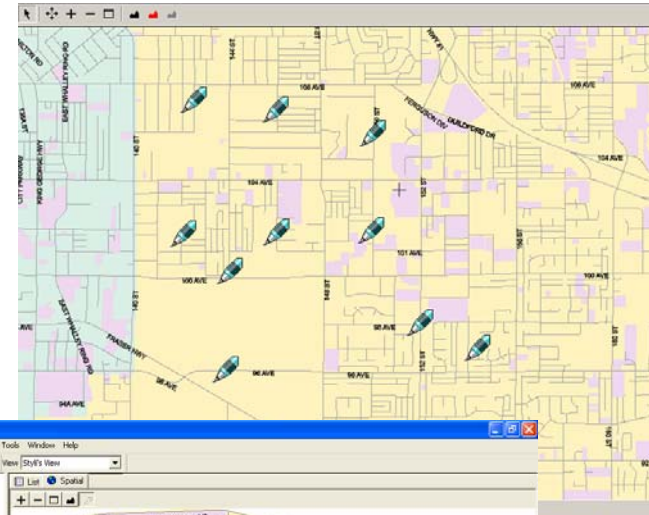
- Production mapping
- Geospatial engineering
- Geospatial Information publishing
- Geospatial Information management
- Interoperability



Geospatial Content Management

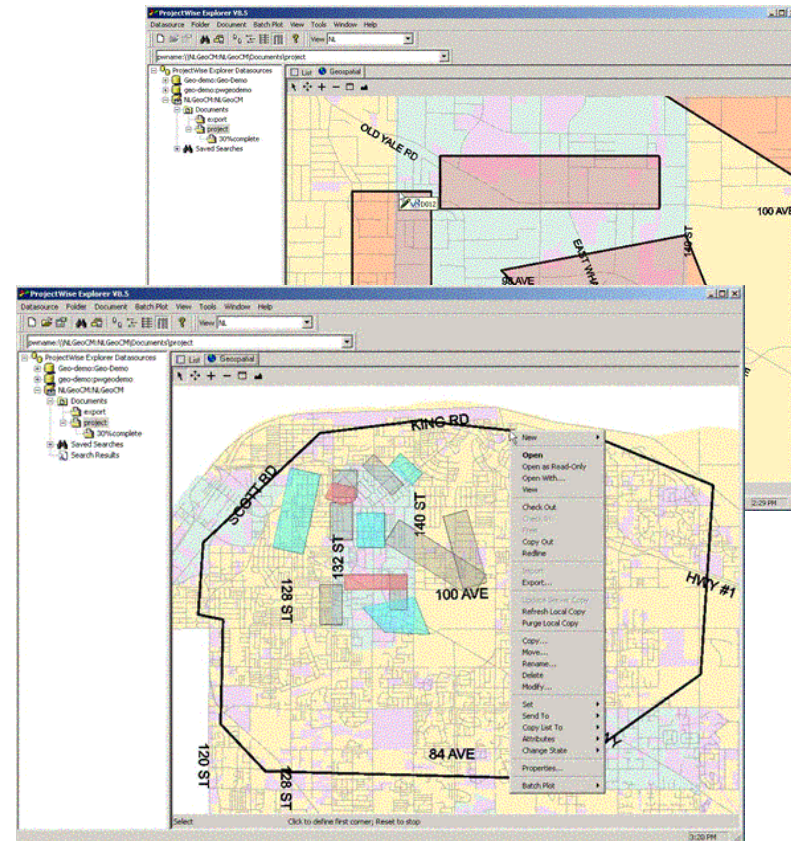
A spatially managed environment for AEC and geospatial content ...

- Digital Security
- Workflow
- Change Management
- Query and Locate



Geospatial Content Management

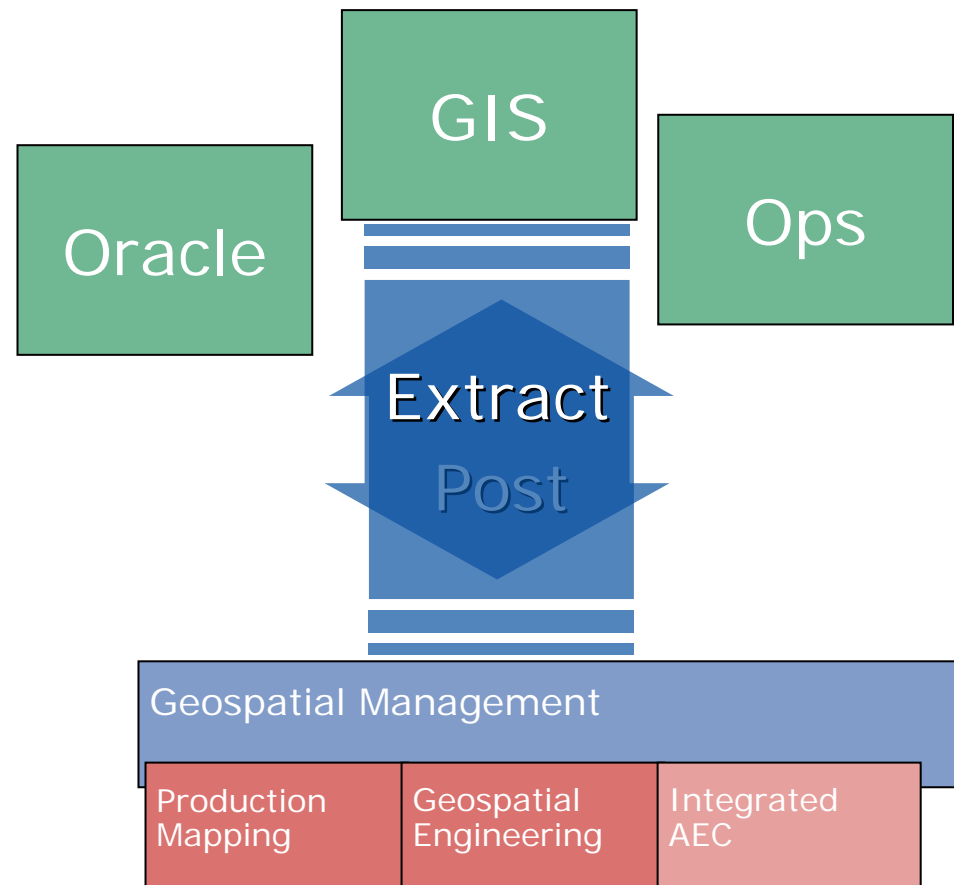
- Rapidly add/view spatial context to documents
- Automated projection management
- Query document location on map



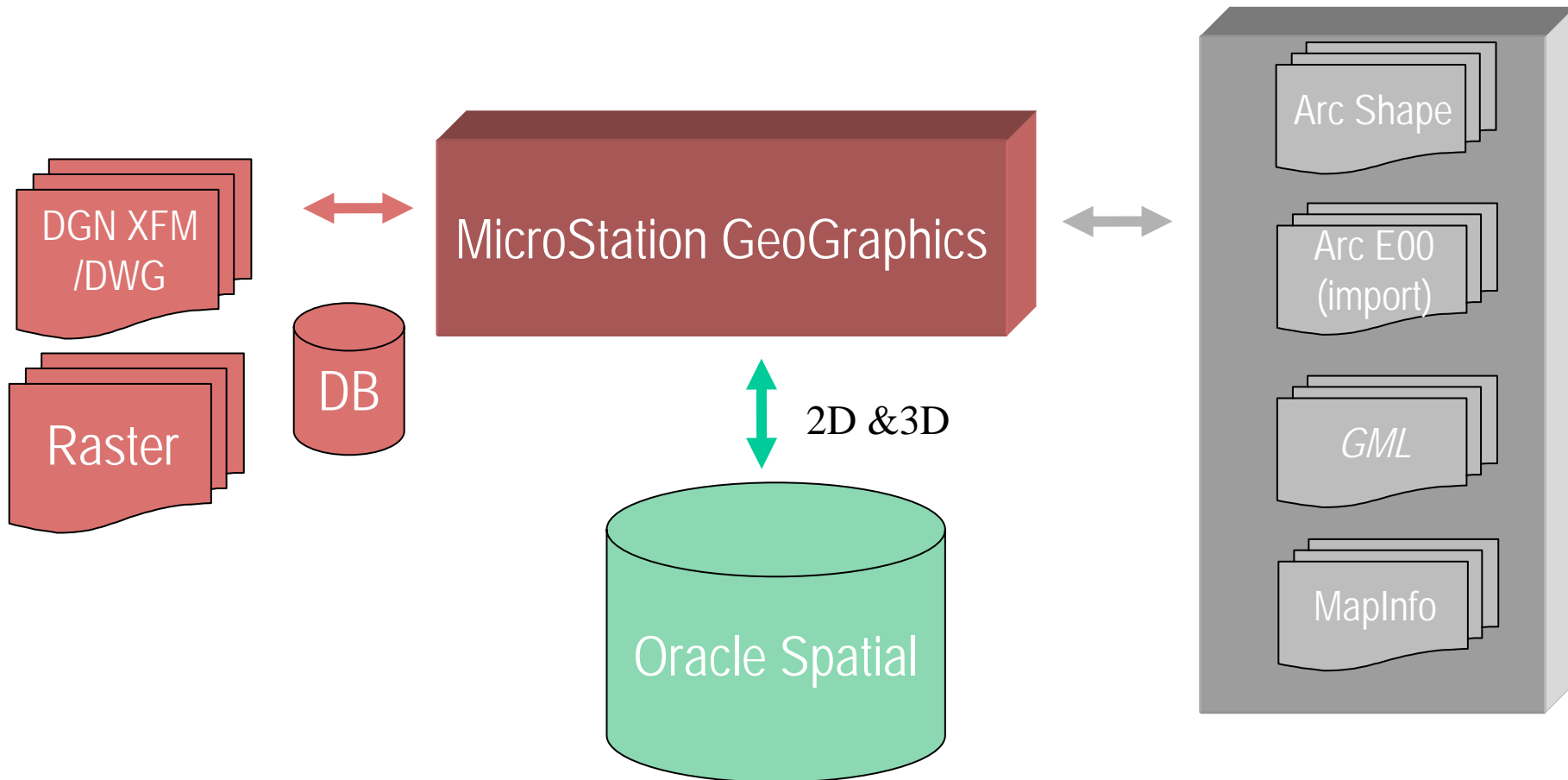
Interoperability

Extending access to spatial content to other enterprise systems...

- Operational solutions
- Enterprise software
- Enterprise data store

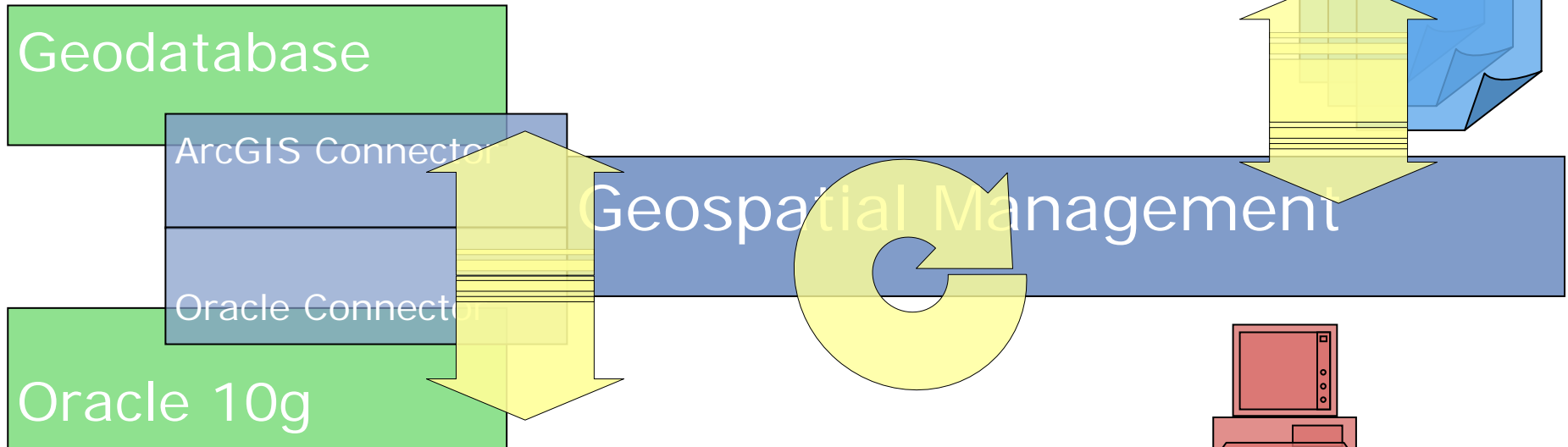


Create



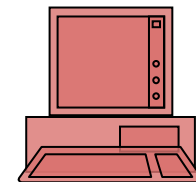
Manage

DGN
DGN, DWG,
Raster



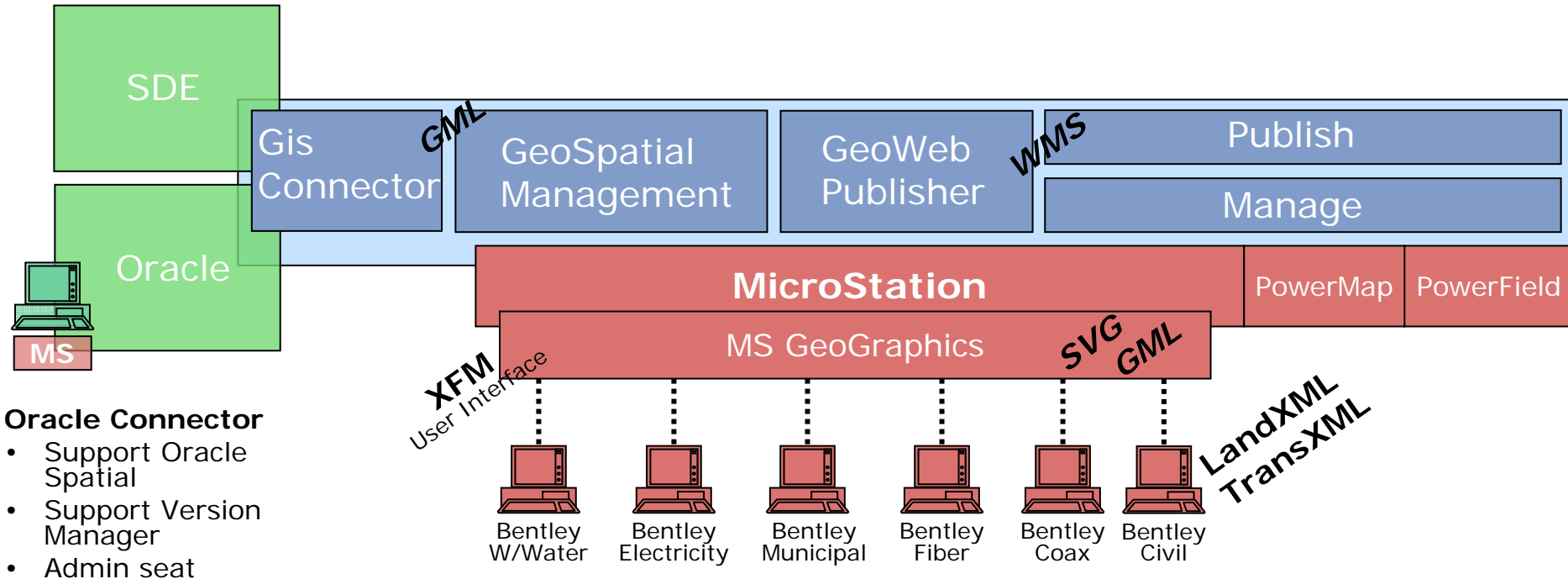
Oracle Connector

- Support Oracle Spatial
- Support Version Manager
- Admin seat



MicroStation GeoGraphics
& Applications

Overview



Oracle Connector

- Support Oracle Spatial
- Support Version Manager
- Admin seat

Demo



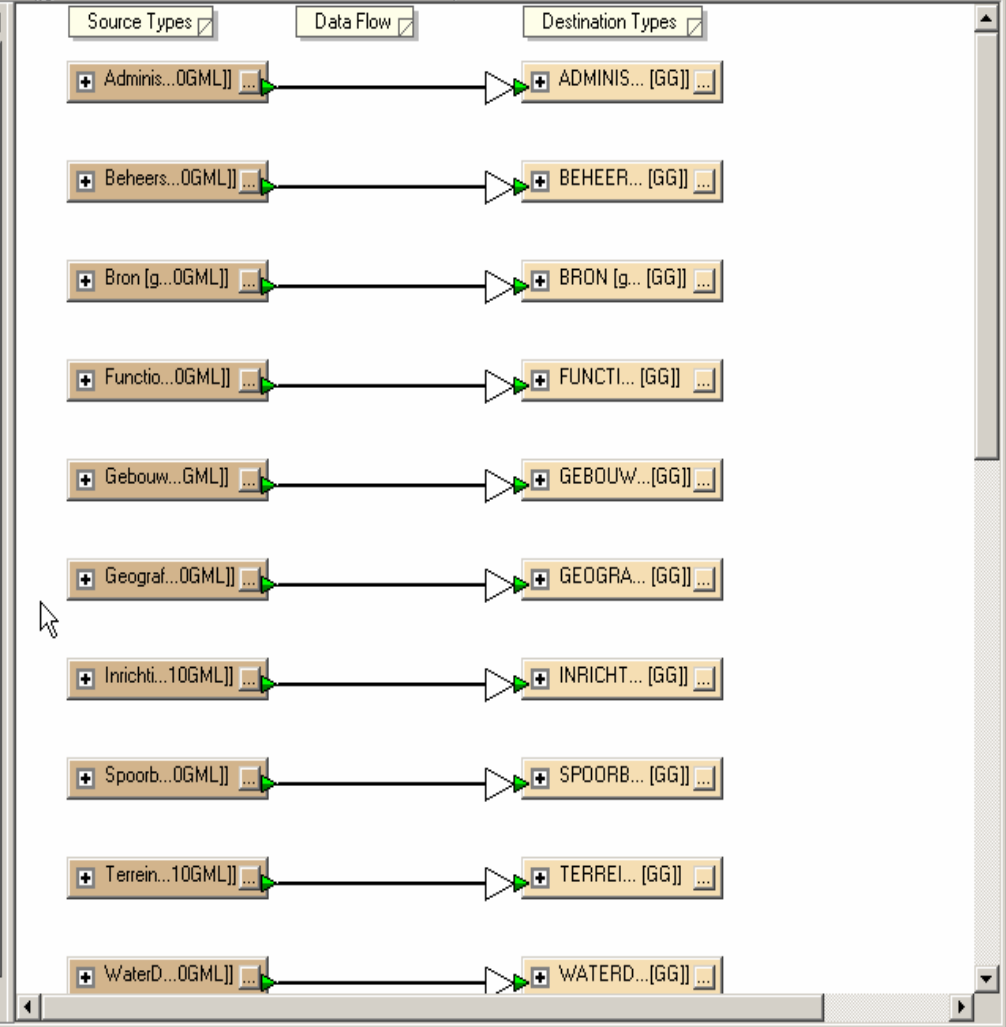
gouda [TOP10GML]

- Parameters
- Feature Types
 - AdministratiefGebied [All]
 - BeheersGebied [All]
 - Bron [fme_no_geom]
 - FunctioneelGebied [All]
 - Gebouw [All]
 - GeografischGebied [All]
 - InrichtingsElement [All]
 - SpoorbaanDeel [All]
 - Terrein [fme_area]
 - WaterDeel [All]
 - WegDeel [All]

gouda [GG]

- Parameters
- Feature Types
 - ADMINISTRATIEFGEBIED [All]
 - BEHEERSGEBIED [All]
 - BRON [All]
 - FUNCTIONEELGEBIED [All]
 - GEBOUW [All]
 - GEOGRAFISCHGEBIED [All]
 - INRICHTINGSELEMENT [All]
 - SPOORBAANDEEL [All]
 - TERREIN [All]
 - WATERDEEL [All]
 - WEGDEEL [All]
- Transformers

Workspace Gallery



```

WATERDEEL (WATERDEEL)          611
WEGDEEL (WEGDEEL)              1526
-----
Total Features Written          3516
-----
Translation was SUCCESSFUL (3516 feature(s)/33455 coordinate(s) output)
FME Session Duration: 23.1 seconds.
    
```



Element Information

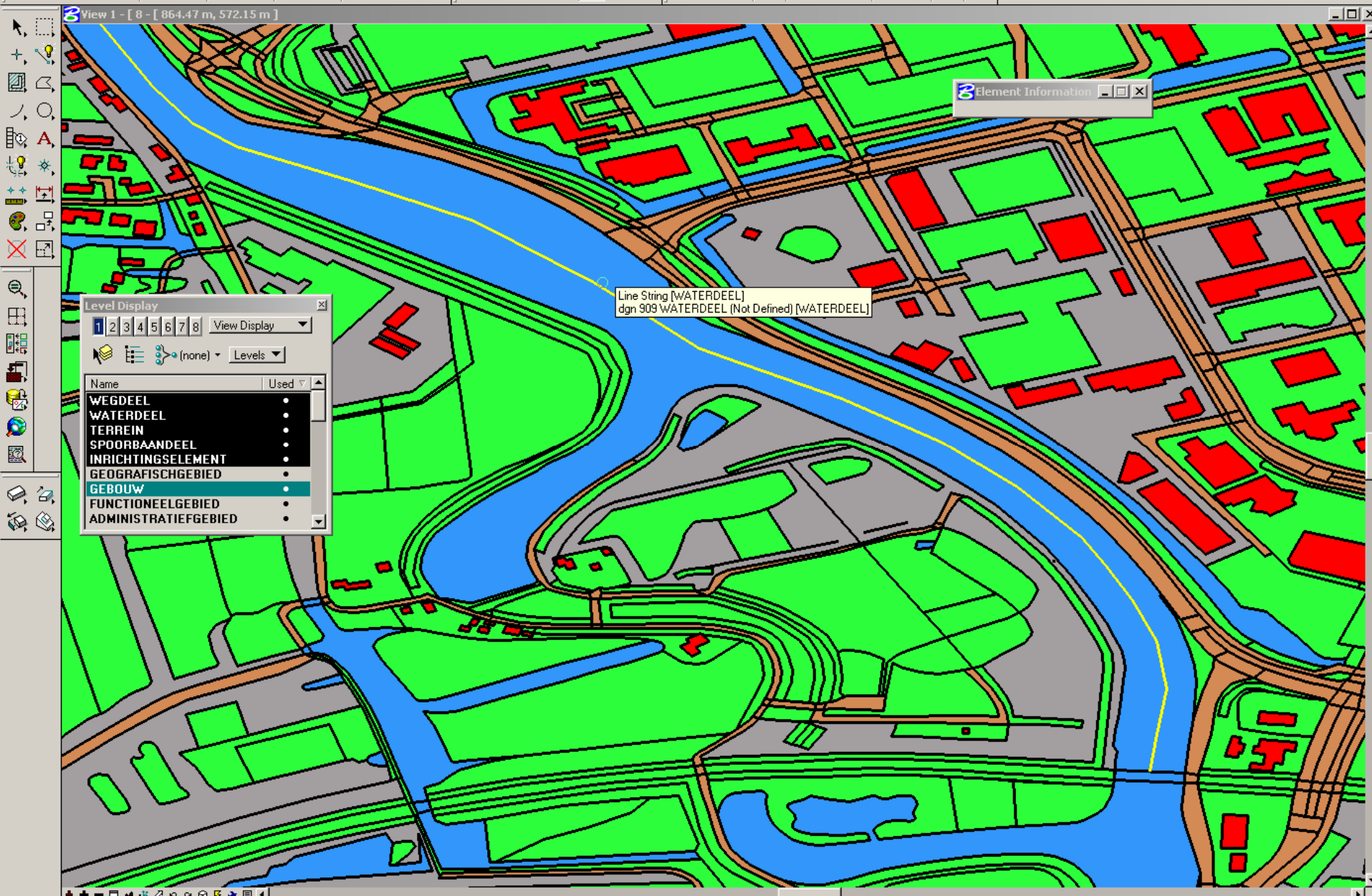
Shape [WATERDEEL]
dgn.909 WATERDEEL (Not Defined) [WATERDEEL]

Level Display

1 2 3 4 5 6 7 8 View Display

(none) Levels

Name	Used
WEGDEEL	•
WATERDEEL	•
TERREIN	•
SPOORBAANDEEL	•
INRICHTINGSELEMENT	•
GEOGRAFISCHGEBIED	•
GEBOUW	•
FUNCTIONEELGEBIED	•
ADMINISTRATIEFGEBIED	•



Level Display

1 2 3 4 5 6 7 8 View Display

(none) Levels

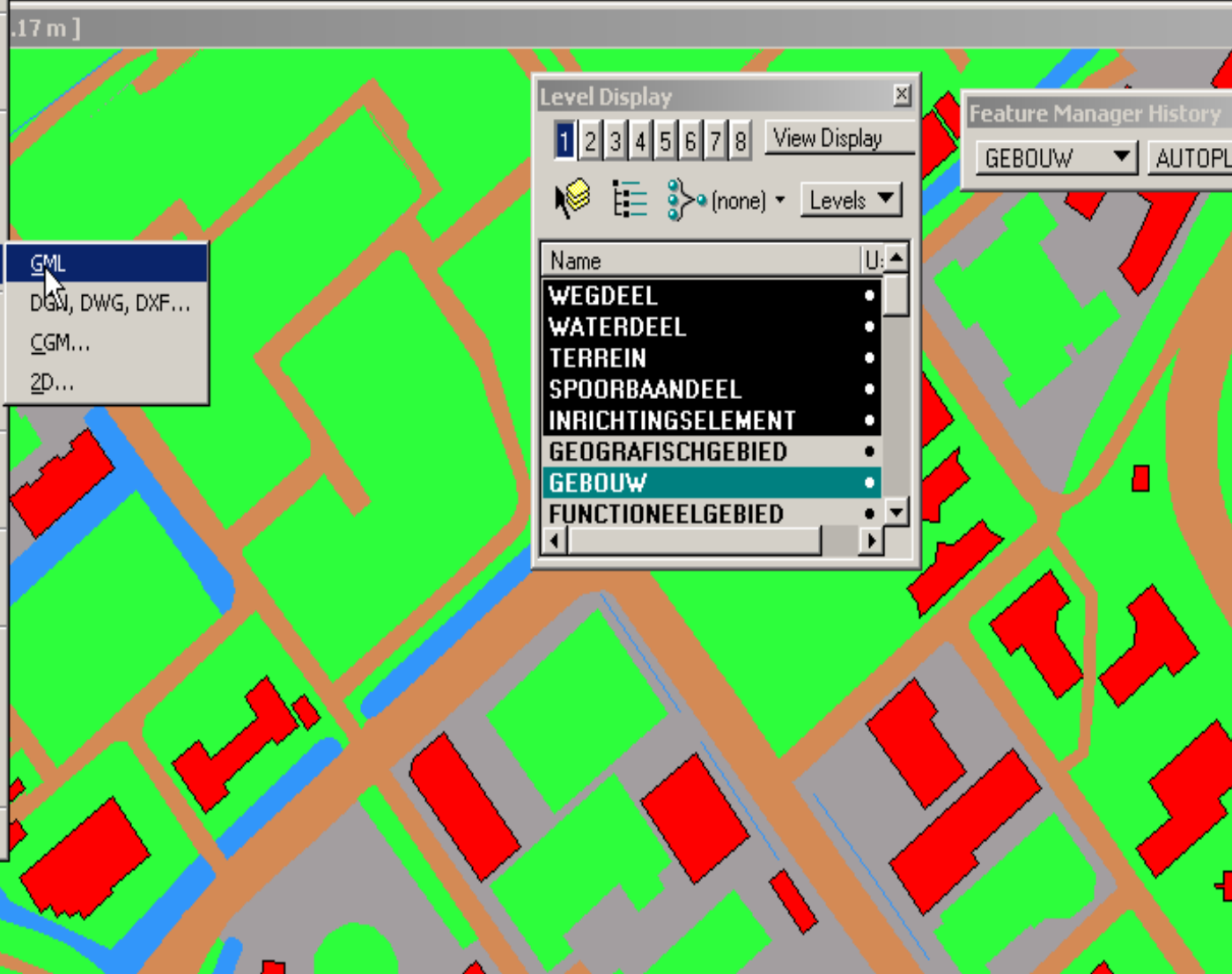
Name	Used
WEGDEEL	•
WATERDEEL	•
TERREIN	•
SPOORBAANDEEL	•
INRICHTINGSELEMENT	•
GEOGRAFISCHGEBIED	•
GEBOUW	•
FUNCTIONEELGEBIED	•
ADMINISTRATIEFGEBIED	•

- New... Ctrl+N
- Open... Ctrl+O
- Close Ctrl+W
- Save Ctrl+S
- Save As...
- Compress
- Save Settings Ctrl+F
- Reference
- Models
- Import
- Export**
 - GML**
 - DGN, DWG, DXF...
 - CGM...
 - 2D...
- Print Preview
- Print Ctrl+P
- Batch Print
- Associate...
- Properties Alt+Enter
- Protection
- Send...
- 1 D:\data\proj\gml2004\dgn\gouda.dgn
- 2 D:\projects\gouda\dgn\gouda.dgn
- 3 D:\projects\gouda\seed\seed3d.dgn
- 4 d:\Data\proj\gml2004\gg\dgn\work.dgn
- Exit

base Utilities Fence/View Scripts Features Topology Tilburg

[0] [Red Line] [Icons: File, Grid, Layers, Info, View, Print, Copy, Paste, Undo, Redo]

[Dropdown] [Icons: Undo, Redo]



Level Display

1 2 3 4 5 6 7 8 View Display

[Icons: Layers, Visibility, Selection] (none) Levels

Name	U:
WEGDEEL	•
WATERDEEL	•
TERREIN	•
SPOORBAANDEEL	•
INRICHTINGSELEMENT	•
GEOGRAFISCHGEBIED	•
GEBOUW	•
FUNCTIONEELGEBIED	•

Feature Manager History

GEBOUW AUTOPL