



CENTRE FOR ADVANCED
SPATIAL ANALYSIS

CASA

Camden 
Primary Care Trust

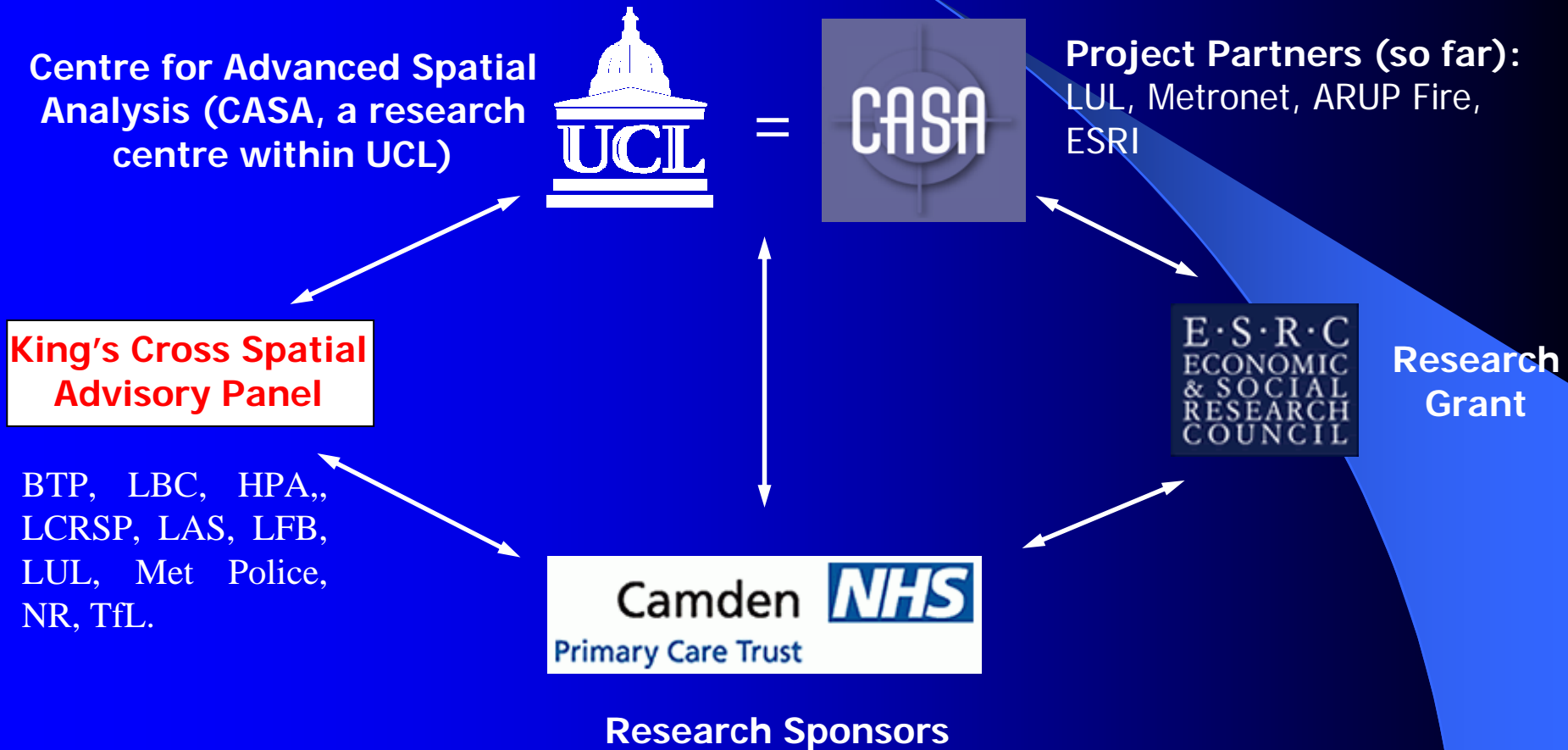
Geo-Information for Disaster Management

**A GIS-Based Spatial Decision Support System
(SDSS) for Emergency Services: London's
King's Cross St. Pancras Underground Station**

Overview

- Background
 - Research partners
- Introduction
 - Research Context => Preparedness
- Project Outline
 - Why?
 - Research Focus & Direction
 - How...
- Centre for Advanced Spatial Analysis
- Discussion

Research Partners



Introduction

- Preparedness
 - Threat is real!
- Civil Contingency Act 2004
 - Part 1: Local arrangements for civil protection
- NHS Emergency Services
 - Essential component of community preparedness
 - Potential weak link
- Results from recent exercises
 - Communications, Decontamination, Equipment

Al-Qaeda London plot 'inevitable'



Quick search:

Wednesday, 3 November 2004

[Home](#) | [Contact us](#) | [A-Z index](#) | [Search](#) | [What's new](#)

Terrorism

Home > Terrorism

Terrorism

The Home Office has information on terrorism within the UK for the public on the threat of terrorism and what the Government is doing to prepare for terrorism.

LONDON

Search London Issues

[Home](#) | [About](#) | [City Hall](#) | [Contact](#) | [FAQ](#) | [Help](#) | [Jobs](#) | [Site map](#)

[Mayor's Publications](#) | [London Issues](#) | [London Assembly](#) | [Media Centre](#)

Press Release

Statement from Mayor of London following counter-terrorist operation
30-3-2004 139

Commenting on the arrest of eight men earlier today the Mayor of London, Ken Livingstone said,

The Metropolitan Police, the security services and the Home Counties police forces should all be congratulated for their work surrounding the arrests.

The police are the front line in guarding against a terrorist attack. But all

- Inside the Home Office
- Community & Race
- Crime & Policing
- Justice & Victims
- Drugs
- Terrorism**
 - The Threats
 - Emergency Procedures
 - What You Can Do
 - What Government is Doing

Further information

[World](#)

[UK](#) [London](#)



30 March 2004

Counter terrorism arrests statement

A counter-terrorism operation involving around 700 officers was carried out last night. Eight British men have been arrested and a tonne of ammonium nitrate fertiliser has been seized.

The following statement was made by DAC Peter Clarke, Chief of Terrorist Investigations.

Have your say
Magazine

The two men were speaking after last week's terror attacks in Madrid which left 200 dead.



Presse

stage
ished

a year

city in



Introduction

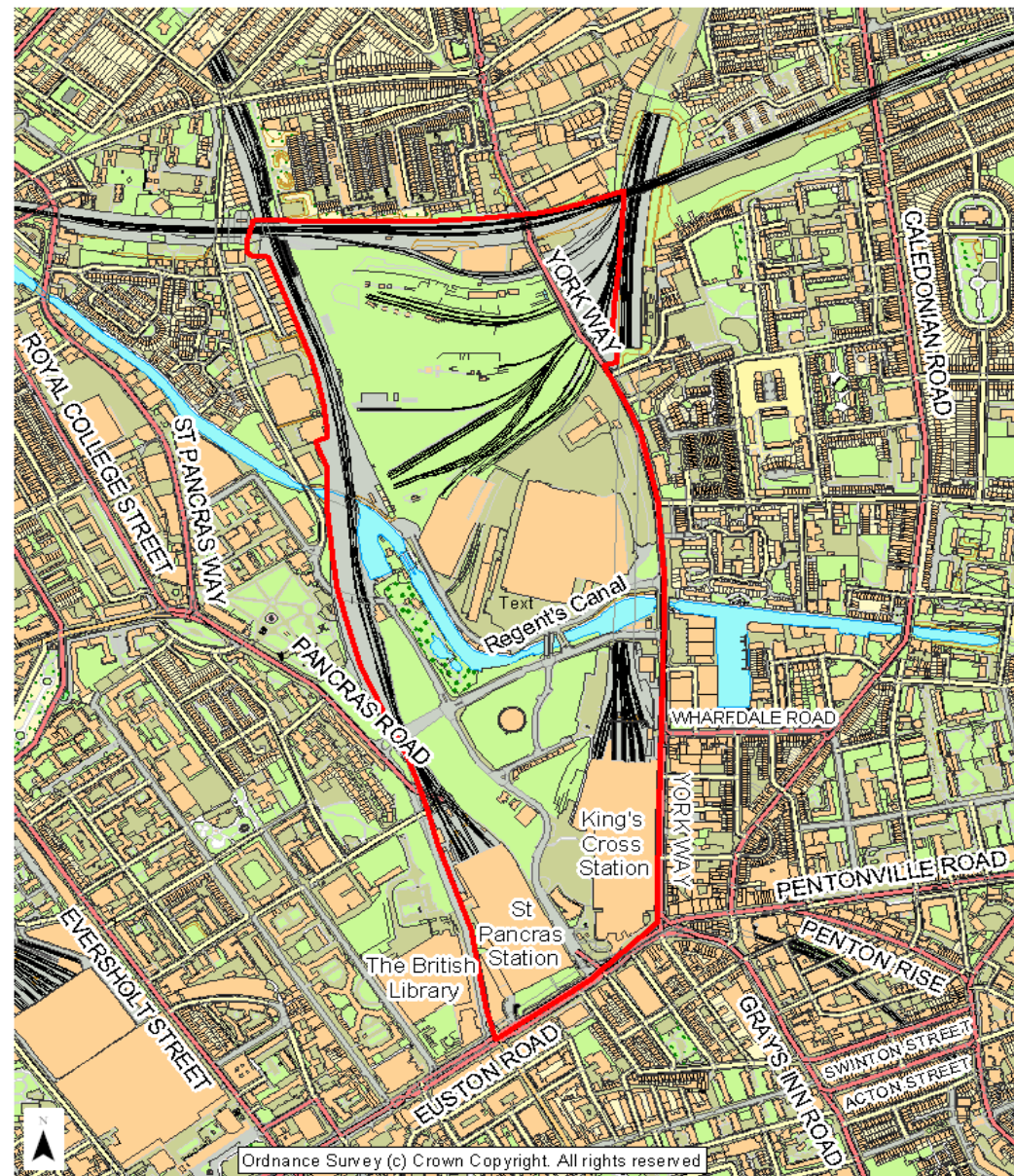
- Preparedness
 - Threat is real!
- Civil Contingency Act 2004
- NHS Emergency Services
 - Essential component of community preparedness
 - Weak links
- Results from recent exercises
 - Communications, Decontamination, Equipment

Project Outline

- Why?
 - 1987 fire of King's Cross St. Pancras underground station
 - Short time = Significant Changes in disaster environment
- Research Goals & Outcomes
 - Contribute to emergency services preparedness
 - How many patients ... ?
 - Benefactors of anticipated outcomes
- How...

King's Cross Redevelopment

- Study Area
 - 1) London Underground
 - 2) Channel Tunnel Rail Link
 - 3) King's Cross Central

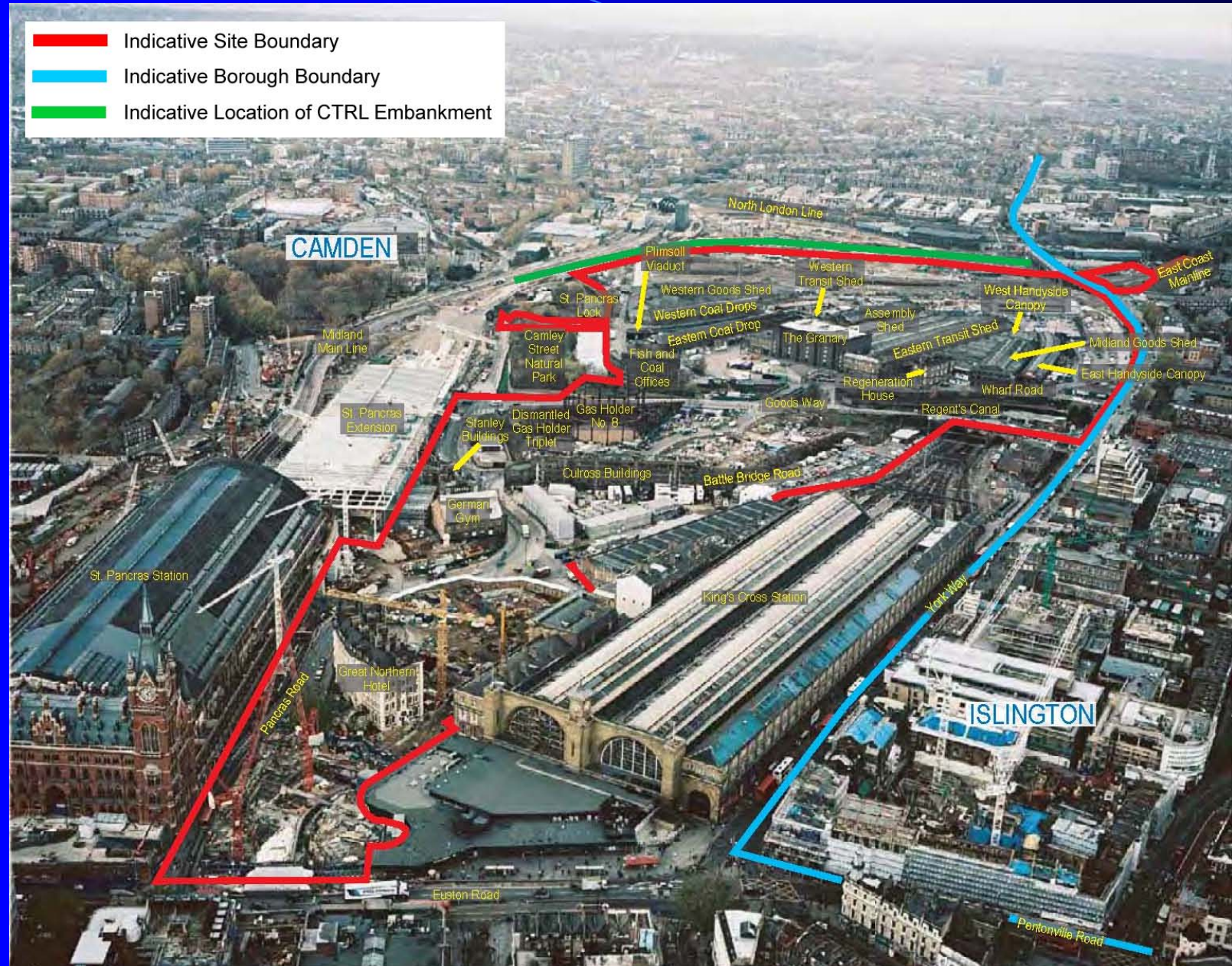


Legend

| | | | | | | |
|-------------------------|-----------------|--------------|-----------------|-------------------------|------|------------|
| Building | Railway or Road | Inland water | Natural surface | Manmade surface or step | | |
| Non- / Coniferous trees | Structure | A road | B road | Local Street | Rail | Study Area |

King's Cross Redevelopment

- Indicative Site Boundary
- Indicative Borough Boundary
- Indicative Location of CTRL Embankment



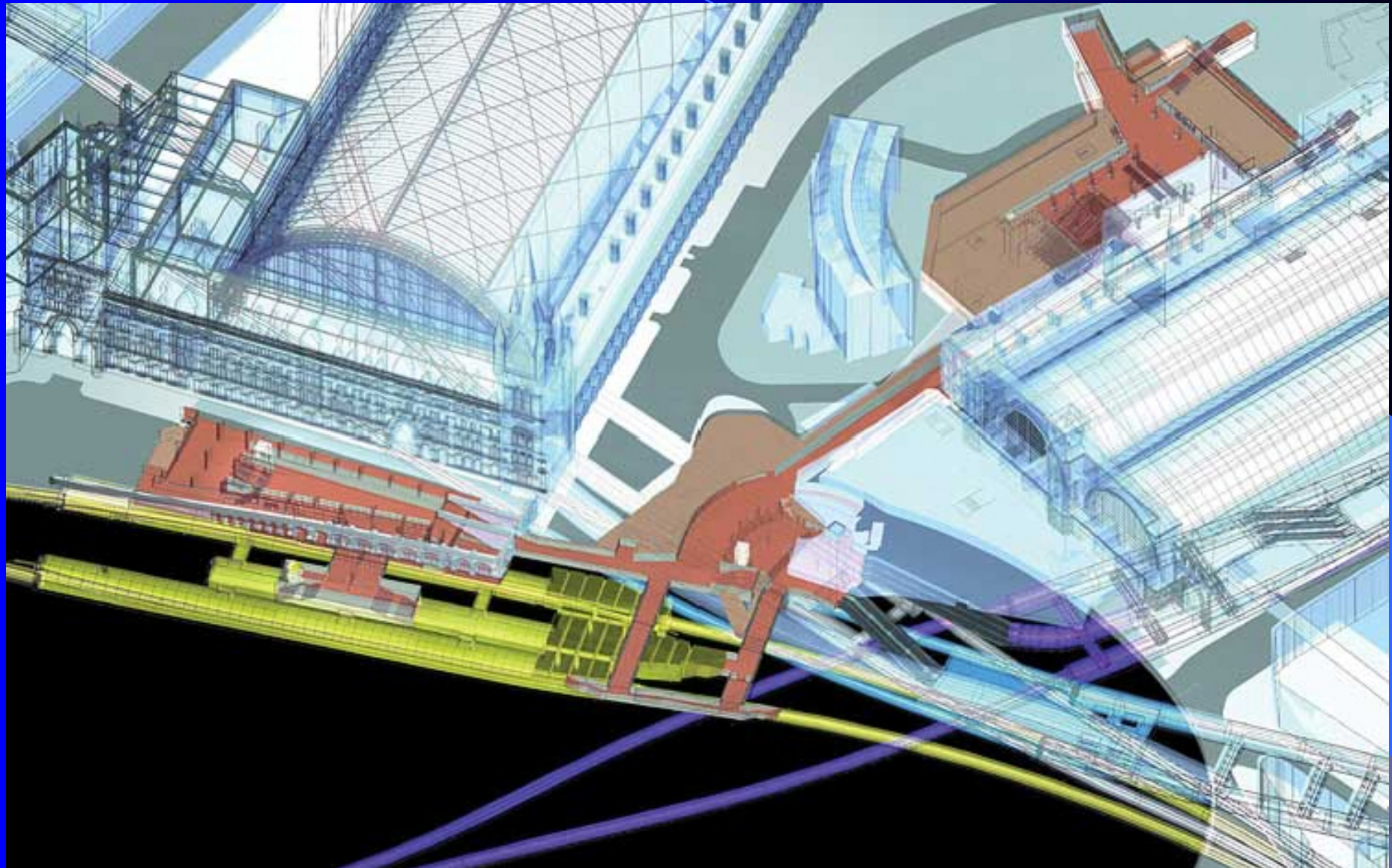
Camden Council (2004)



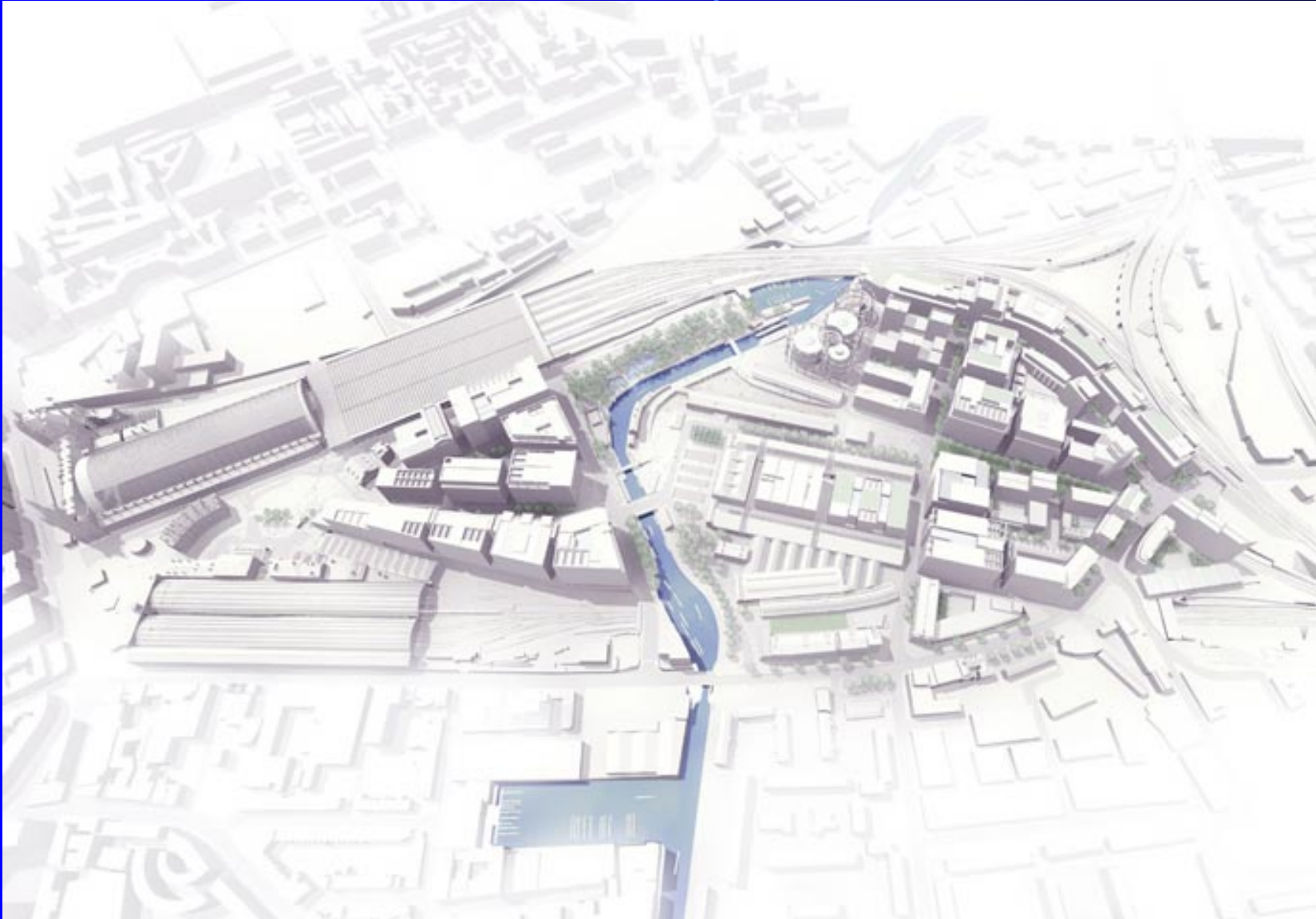
King's Cross Channel Tunnel Rail Link



King's Cross Underground



King's Cross Central



Argent-St-George (2004)

CASA

Centre for Advanced Spatial Analysis

- CASA's Research Interests
 - Nottingham Carnival
 - Virtual London
- Current State of KXSDSSES
 - Advisory Panel
 - LUL: 2 & 3D station drawings
 - KX Fly Through
 - Pedestrian simulation programs
 - Network Analysis and Route Optimisation

Notting hill Carnival

Address <http://www.thecarnival.tv/map/main.htm>

Google notting hill carnival Search Web Search Site PageRank Page Info Up Highlight notting hill carnival

Nottinghill Carnival

- a about us
- m route map
- i carnival info
- b bands
- e main events
- n features
- d carnival diary
- c contacts

Legend:
pedestrian area
2 float judging
traffic exclusion zone

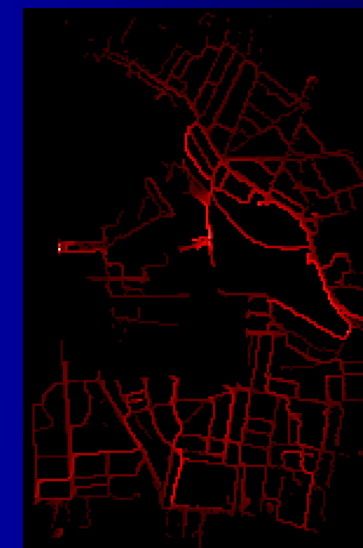
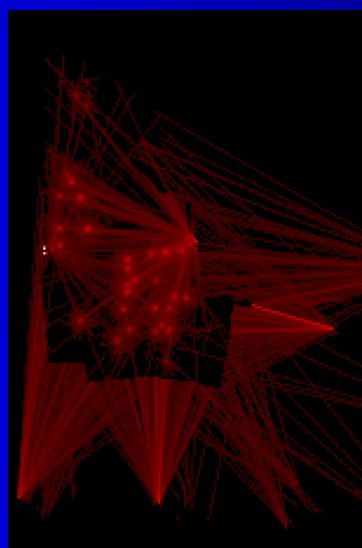
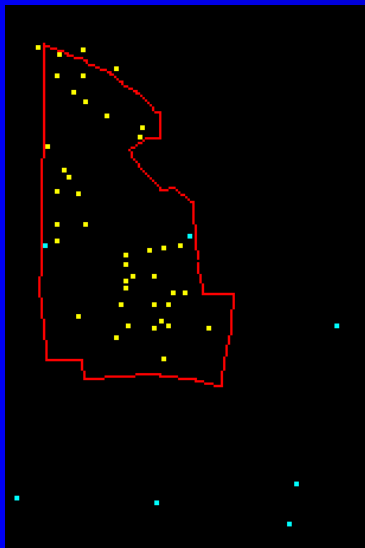
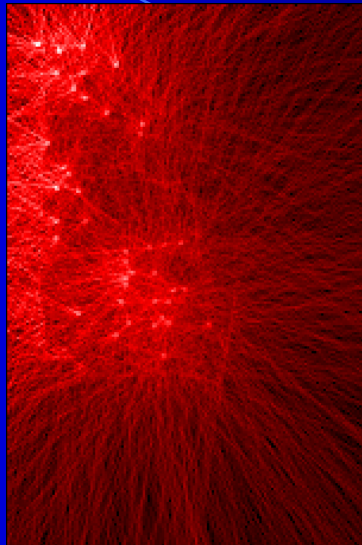
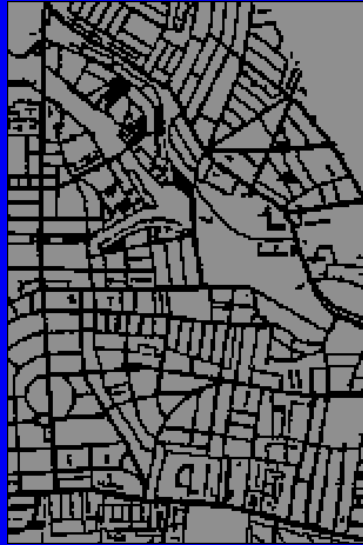
see bus routes click here

moviemap created by Quickmap

Copyright 2001 Quickmap Limited

first aid toilets safety zone
lost & found children crime reporting centre

Notting hill Carnival



Batty, M., Desyllas, J. and Duxbury, E. (2003), 'Safety in Numbers? Modelling Crowds and Designing Control for the Notting Hill Carnival', Urban Studies, 40 (8): 1573-1590.

Centre for Advanced Spatial Analysis

- CASA's Research Interests
 - Nottingham Carnival
 - Virtual London
- Current State of KXSDSSES
 - Advisory Panel
 - LUL: 2 & 3D station drawings
 - KX Fly Through
 - Pedestrian simulation programs
 - Network Analysis and Route Optimisation

KX SDSS

Image Unavailable



KX SDSS

Image Unavailable



Centre for Advanced Spatial Analysis

- CASA's Research Interests
 - Nottingham Carnival
 - Virtual London
- Current State of KXSDSSES
 - Advisory Panel
 - LUL: 2 & 3D station drawings
 - KX Fly Through
 - Pedestrian simulation programs
 - Network Analysis and Route Optimisation

Discussion

Christian Castle,
1-19 Torrington Place, Gower Street, London,
WC1E 7HB

Phone: 0207 679 4260

E-mail: c.castle@ucl.ac.uk

Website: <http://www.casa.ucl.ac.uk/kxsdsses>